



April 2022

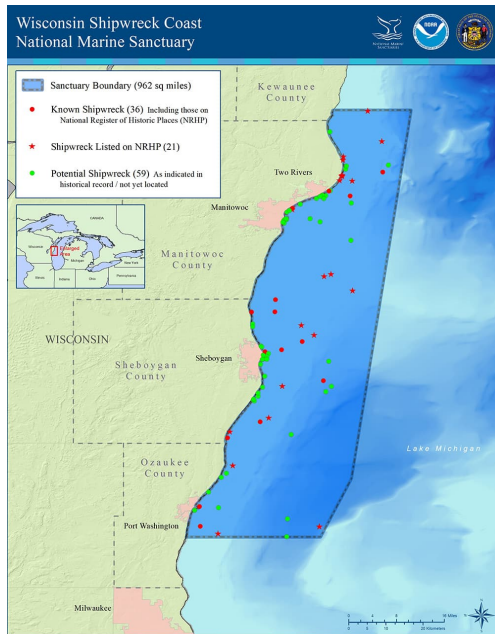
# on the Move

*Local maritime news, events and history from the Chicago Maritime Museum*

## Above and Below the Waves: A Presentation of the Wisconsin Shipwreck Coast National Marine Sanctuary

Join the Chicago Maritime Museum on Friday, April 15 for our Third Friday virtual maritime presentation when maritime archaeologist Russ Green will provide an overview of the Wisconsin marine sanctuary and talk about recent fieldwork and community engagement projects.

[Register Here](#)



The 36 historic shipwreck sites within the sanctuary represent vessels that played a central role in building the nation between the 1830s and 1930s. Twenty-seven are listed on the **National Register of Historic Places** and research suggests that another 60 shipwrecks may yet to be discovered.

Russ Green is a maritime archaeologist and Great Lakes regional coordinator for **NOAA's Office of National Marine Sanctuaries**. Russ has worked in the Great Lakes for 20 years, first as an underwater archaeologist for the state of Wisconsin and later as deputy superintendent at the **Thunder Bay**

**National Marine Sanctuary** in Alpena, Michigan. He's contributed to dozens of maritime archeology projects along the east and west coasts, Bermuda, Micronesia, and Japan, and regularly leads NOAA field research in the Great Lakes. Russ is currently leading start up efforts for the new Wisconsin Shipwreck Coast National Marine Sanctuary.

**Non-CMM members:** After registering, we request that you donate \$5 to support the museum and events such as this. Better yet, join us! Your donation supports these efforts as we stay connected with our lively Third Friday presentations and our monthly newsletter, ***On the Move***. Your \$35 or more donation buys you a year-long CMM membership.

Donate or Join Here

---

## Curator's Corner

By Dylan Hoffman

### CMM Displays Ted Brennan Prints on Historic Vessels



Ships and the scenic waterways they sail play a significant role in society and inspire artists to seize their majestic beauty. One such local artist - Ted Brennan (1916-1997) was interested in wooden boats of all form and function. He painted portraits of both commercial vessels and historic yachts.

Ted was an artist and a designer, serving as the editor of the **National Class E Scow Association** publications from 1965 until 1981. During that time, he created over 50 magazines that included his pen drawings of local vessels and crew. Brennan was a partner of the Chicago design firm of Latham, Tyler, and Jensen, where he developed plans for the interiors of airliners.

This 1985 Ted Brennan print of *Commerce* was reproduced from a painting commissioned for H.N. Barkhausen. ***Commerce*** was built in 1857 by Captain David Dibble at the East Battery Shipyard in Sandusky, Ohio for L. H. Pratt of Buffalo, New York. Launched on June 3, 1857, her first trip was to Buffalo with 20,300 bushels of corn. After several changes in ownership, she was re-rigged in Chicago as a schooner. ***Commerce*** sailed out of Chicago mostly carrying

lumber until 1906 when she was converted to a lumber barge. In November of 1909, she waterlogged while under tow, near Sheboygan, WI. Fortunately, the captain and crew were rescued as **Commerce** capsized and sank at a total loss - vessel \$5,000 and cargo \$2,500.

CMM is currently displaying prints of the schooners **Clipper City**, **Hustler**, and **Libby Nau** by Ted Brennan in the Age of Sail gallery. The museum is home to a collection of Brennan's artworks, including pen drawings of the one-design race boats - **Thistle**, **Rhodes 19**, **Flying Dutchman**, and the **International 14**, all donated by Don Kusterer in March of 2021.

---

## Great Lakes Authority Bill Submitted by House Dems



Rep. Marcy Kaptur, a Democrat who represents Ohio's 9th Congressional District, introduced the Great Lakes Authority Act on March 17. The bill would create and fund the Great Lakes Authority, which would serve as a federal entity dedicated to advancing solutions to challenges faced by the eight states of the Great Lakes region – Michigan, Ohio, Illinois, Indiana, Wisconsin, Minnesota, New York and Pennsylvania.

[Read More Here](#)

---

## Ernest Shackleton's Ship *Endurance* Found



Over a century after it sank to the depths of the Weddell Sea off the coast of Antarctica, the lost ship of Anglo Irish explorer Ernest Shackleton has been found.

[Read More Here](#)

---

## The Canal that Built Chicago



In 1848, the 96 mile, Illinois and Michigan Canal opened, linking Lake Michigan to the Illinois River. The I&M Canal revolutionized trade and travel in the United States by connecting the Atlantic Ocean with the Mississippi River. The canal catapulted Chicago to the status of an economic powerhouse.

## Maritime Event Calendar

Check out local maritime events at the Chicago Maritime Museum [website calendar page](#).

Submit maritime events in the Chicagoland area or story ideas to Mary Ann O'Rourke at [maorourke58@gmail.com](mailto:maorourke58@gmail.com).

### Ready to join or renew your membership?

Information about our membership offers can be found [here](#). If you need further membership support please email us at [cmm@chicagomaritimemuseum.org](mailto:cmm@chicagomaritimemuseum.org)

---

*We hope you've enjoyed our monthly e-newsletter, On the Move.*

